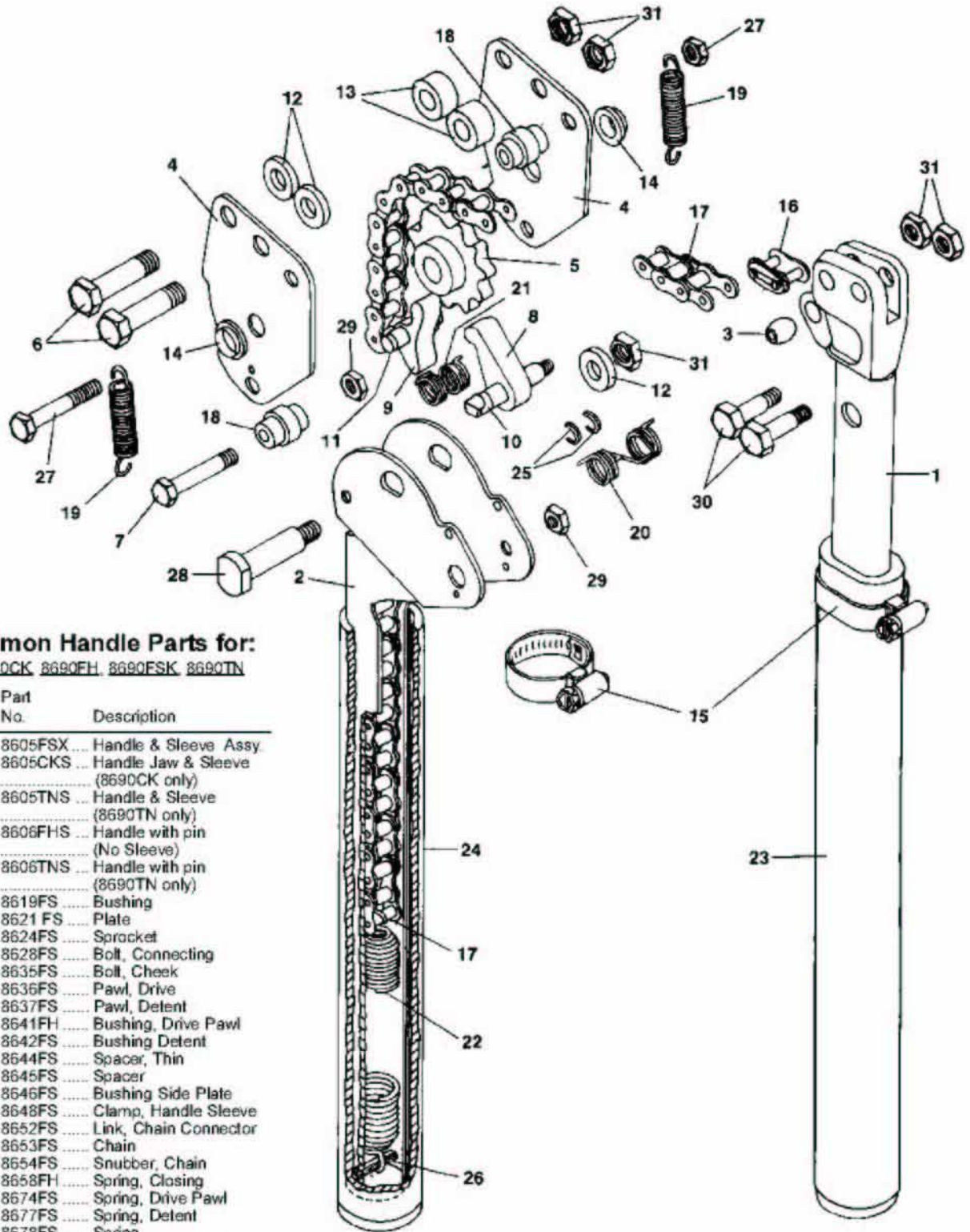


Parts Breakdown for 8690 Series

See next page for different heads!

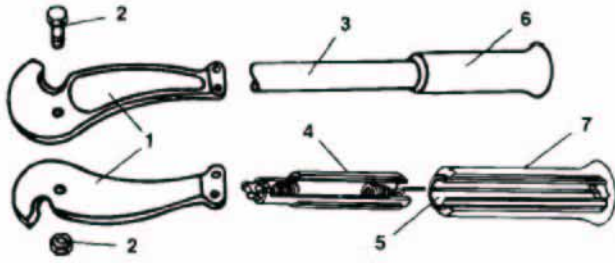


Common Handle Parts for:
8690CK 8690FH 8690FSK 8690TN

| Item No. | Part No. | Description |
|----------|----------|-----------------------------------|
| 1 | 8605FSX | Handle & Sleeve Assy. |
| 1 | 8605CKS | Handle Jaw & Sleeve (8690CK only) |
| 1 | 8605TNS | Handle & Sleeve (8690TN only) |
| 2 | 8606FHS | Handle with pin (No Sleeve) |
| 2 | 8606TNS | Handle with pin (8690TN only) |
| 3 | 8619FS | Bushing |
| 4 | 8621FS | Plate |
| 5 | 8624FS | Sprocket |
| 6 | 8628FS | Bolt, Connecting |
| 7 | 8635FS | Bolt, Cheek |
| 8 | 8636FS | Pawl, Drive |
| 9 | 8637FS | Pawl, Detent |
| 10 | 8641FH | Bushing, Drive Pawl |
| 11 | 8642FS | Bushing Detent |
| 12 | 8644FS | Spacer, Thin |
| 13 | 8645FS | Spacer |
| 14 | 8646FS | Bushing Side Plate |
| 15 | 8648FS | Clamp, Handle Sleeve |
| 16 | 8652FS | Link, Chain Connector |
| 17 | 8653FS | Chain |
| 18 | 8654FS | Snubber, Chain |
| 19 | 8658FH | Spring, Closing |
| 20 | 8674FS | Spring, Drive Pawl |
| 21 | 8677FS | Spring, Detent |
| 22 | 8678FS | Spring |
| 23 | 8680CKS | Sleeve and Clamp |
| 24 | 8681FH | Sleeve (no Clamp) |
| 25 | 8683FH | Ring, Ret. |
| 26 | 8685FH | Pin, Spring |
| 27 | 8687FHS | Bolt and Nut |
| 28 | 8692FS | Bolt, Sprocket |
| 29 | 0109SK | Nut, Cheek Bolt |
| 30 | 0135SK | Bolt |
| 31 | 2666K | Nut |

***8690 SERIES: Contact Customer Service or Product Specialist when ordering 8790 Ratchet Tool Parts.**

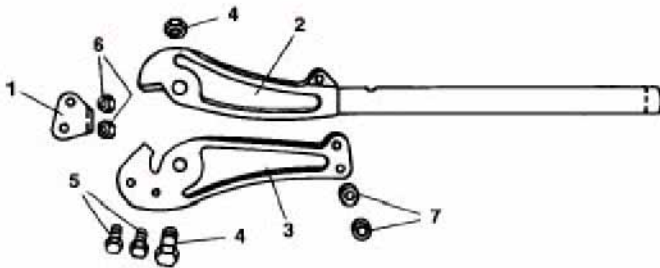
8690TN Ratchet Cutter



Parts for 8690TN

| Item No. | Part No. | Description |
|----------|----------|-------------------|
| | 8613TN | Cutterhead |
| | 8612TN | Jaws, Pair |
| 1 | 8610TN | Jaw |
| 2 | 1792TGS | Bolt Assy., Pivot |
| 3 | 8605TNS | Handle w/Grip |
| 4 | 8606TNS | Handle w/Grip |
| 5 | 8679TN | Extension Spring |
| 6 | 0280M | Grip, Rubber |
| 7 | 0380M | Grip, Rubber |

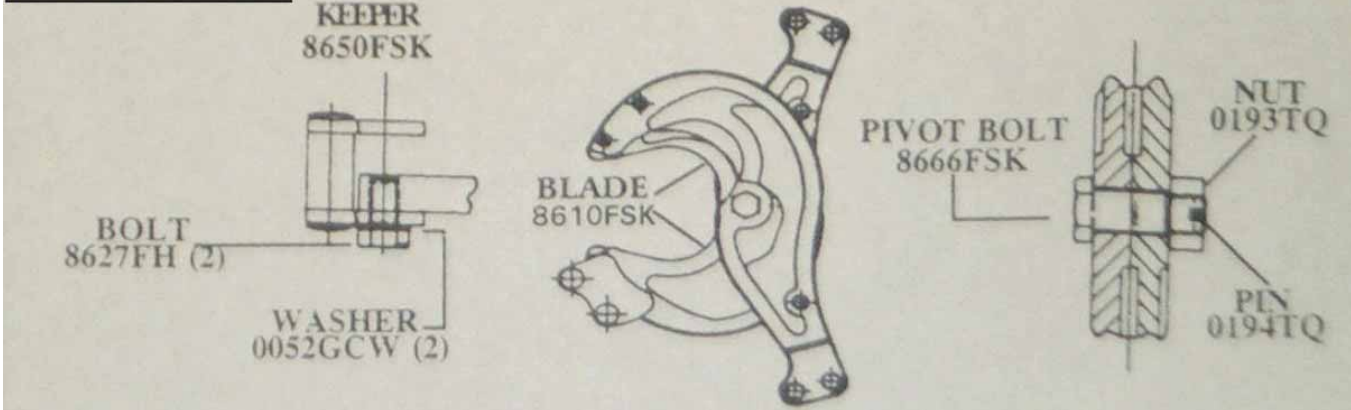
8690CK Ratchet Cutter



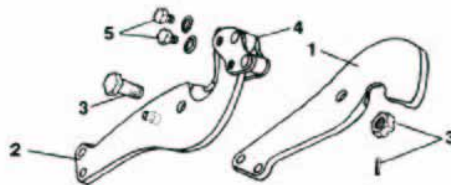
Parts for 8690CK

| Item No. | Part No. | Description |
|----------|----------|-------------------------------|
| | 8613CK | Cutterhead |
| 1 | 8611CK | Blade |
| 2 | 8610CK | Blade w/Handle (No Sleeve) |
| 3 | 8620CK | Cheek |
| 4 | 8695CK | Bolt Assy., Pivot |
| 5 | 0135SK | Bolt |
| 6 | 0693C | Nut |
| 7 | 8643CK | Spacer |

8613FSK Cutterhead



8690FH Cutterhead



Parts for 8690FH

| Item No. | Part No. | Description |
|----------|----------|--------------------|
| | 8613FH | Cutterhead |
| | 8612FH | Jaws, Pair |
| 1 | 8610FH | Jaw |
| 2 | 8609FH | Jaw w/Keeper |
| 3 | 8695FH | Bolt Assy., Pivot |
| 4 | 8650FH | Keeper Assy. |
| 5 | 0052GC | Bolt, Keeper Assy. |