

## Parts List for 300A + 344A

Item	Description	300A	344A
A	Idler Roller Ass'y (Complete)	399	3599
B	Rollpin, 7/8"	H5250	H5250
C	Nut, Hook	16	H3986P
D	Hook with latch	24	L3-1S
E	Ring, Retaining	322RR	322RR
F	Shaft, Roller	396R	396R
G	Shaft, Quick Disconnect	3496	3496
H	Roller	3495	3495
J	Yoke	391	392
K	Swivel Shackle Ass'y (Complete)	335	335
L	Latch Kit	10	10
N	Handle	350	3050
	Handle, 36" (opt.)	3650	3650
P	Handle w/ Hot Stick Ring	350SPL	3450
	Handle, 36" w/Ring (opt.)	3650SPL	3650SPL
Q	Eye Bolt	25	25
R	Nut, Eye Bolt	16	16
S	Shaft, Loading Pawl	2459R	445R
T	Pawl, Loading	241	441
U	Spring, Reversing	42	42
V	Lever, Hot Stick	-	-
W	Lever, Spring	-	-
X	Lever, Reversing	47	47
Z	Rollpin, 1 1/4"	73-1	73-1
AA	Rollpin, 1 1/2"	H5245	H5245
BB	Wheel	32R	32R
CC	Shaft, Drum	272	472
DD	Strap	371/10	372/12
EE	U-Frame Ass'y (Complete)	246	446
GG	U-Frame	240	440
JJ	Handle Lock Screw	51	51
KK	Drum	370	3470
LL	Shaft, Holding Pawl	219R	219R
MM	Pawl, Holding	21Z	21Z
NN	Control Pawl Ass'y	20G	20G
PP	Spring	31	31
QQ	Rollpin, 2 1/4"	H5257	H5257
RR	Roller, Guide	326	326
SS	Mainframe, w Brgs.	311	3411
TT	Latch Kit	10	H7540

# Models 300A and 344A

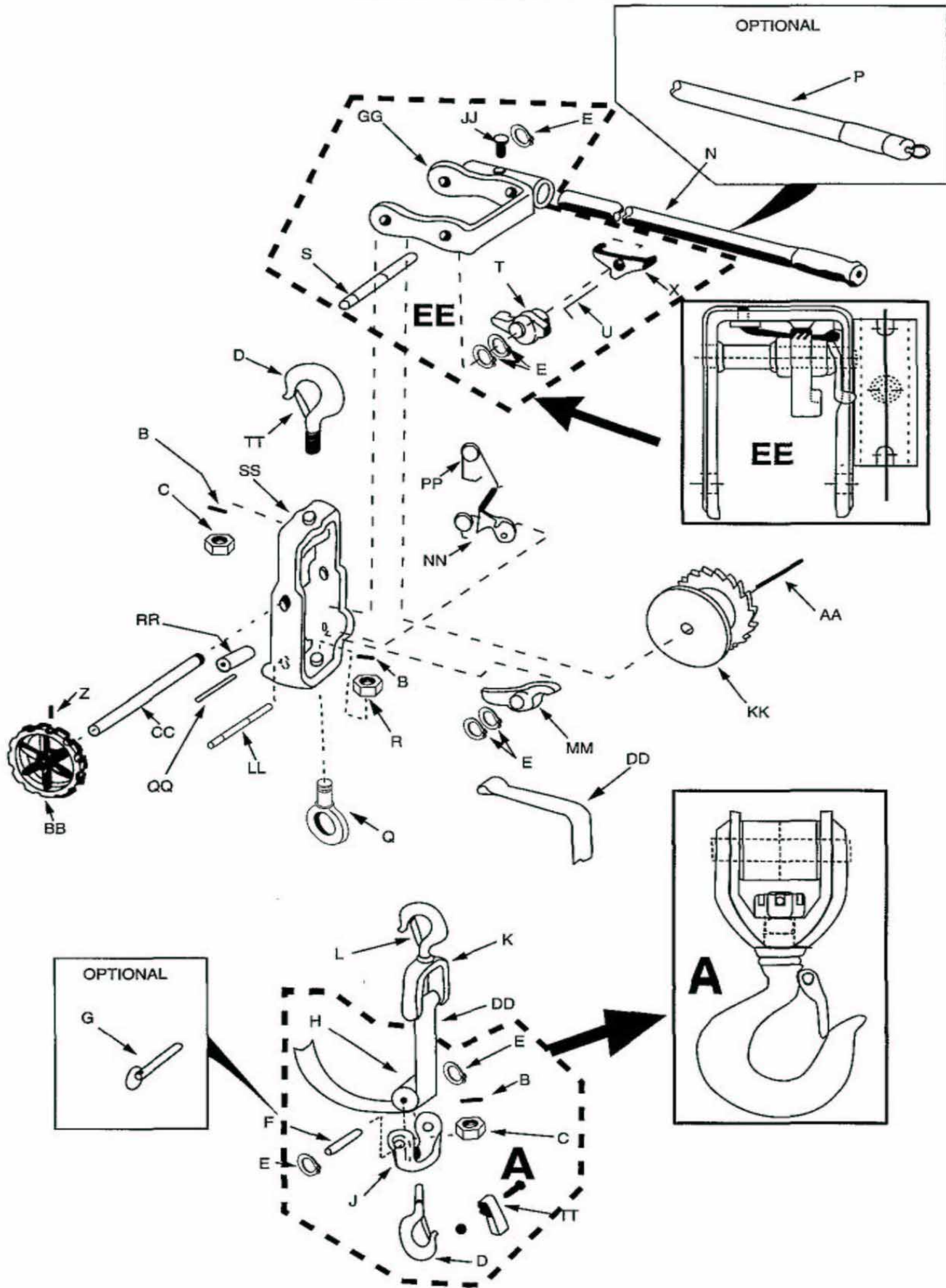


Figure 1